

CODED NOTES

1. Provide easy to read signage at park entries and a large sign at the northwest corner. Provide wayfinding signs throughout the park with park information, trail distances, and directions to the various amenities
2. Existing parking lot
3. Existing asphalt drive
4. Existing Picnic Shelter
5. Existing Splash Pad
6. Existing playground equipment
7. Expanded parking area
8. Pickleball Courts
9. Patio with picnic tables
10. 10' wide loop trail that ties into the existing trail
11. Existing 10' wide trail
12. 5' wide trail to provide alternate routes
13. Plant shade and evergreen trees throughout the park
14. Bump outs in the trail for outdoor exercise equipment
15. Concrete Roller Rink with fencing to contain activities
16. Renovate existing Basketball Courts
17. Obstacle / Ninja Course designed for older kids
18. Provide greenspace between parking area and new 10' wide trail
19. Constructed hill and pavement added to expand seating for the existing stage. The hill can double for a sledding hill in the winter
20. Provide benches a maximum of 300' apart throughout the park
21. Future expansion of playground. Provide play equipment designed to be inclusive of all ages and mobility levels
22. Make play spaces more inclusive by connecting them with a sidewalk that doesn't exceed a 5% slope.
23. Take advantage of the hillside with a hillside slide for fun access to the playground and climbing walls made of natural ledge stone that connects play areas to walkways
24. Provide accessibility to the existing playground by adding a new sidewalk at 5% max. slope from the picnic shelter
25. Existing bridge over pond spillway
26. Provide accessibility to the existing picnic tables along the pond by paving from the slab to the trail
27. Dog Park with a gated double entry, agility activities and access to drinking water. Provide separate areas for large and small dogs
28. Open lawn
29. Gate and accessible route between John Wolfe Park and the neighborhood park
30. Develop the southeast entry into a neighborhood park with a play area, sitting / picnic area, lawn and distinct entry. Provide wayfinding signage to show linkage to John Wolfe Park
31. Add decorative fencing to help delineate parkland

TROTWOOD PARKS CONCEPTUAL PLANS

JOHN WOLFE PARK

CONCEPTUAL DRAWING: NOT FOR CONSTRUCTION

REVISIONS:

CHECKED BY
JJB

DRAWN BY
CLD

PROJECT
JOHN WOLFE PARK

DATE
07/15/24





CODED NOTES

1. Provide easy to read signage at all entries and wayfinding signs throughout the park with park information, trail distances, and directions to the various amenities
2. Existing asphalt drive
3. Existing parking lot
4. Existing Picnic Shelter
5. Splash Pad
6. Replace existing playground equipment with two-level expanded playground with pieces suitable for a wide range of ages and abilities
7. Pickleball Courts
8. Renovate existing Basketball Courts
9. Tennis Court
10. Patio with picnic tables
11. Improve and repave existing trail
12. Newly paved existing trail
13. Plant shade and evergreen trees as shown on plan
14. Bump outs in the trail for outdoor exercise equipment
15. Concrete Roller Rink with fencing to contain activities
16. Sand Volleyball Courts
17. Expanded stage and seating area
18. Existing Community Building
19. Connect all amenities with new walks and trails
20. Provide accessibility to the existing creekside shelters with a walk connecting to the existing trail and to the shelters
21. Open lawn
22. 18 Hole Disc Golf Course (Blue: T-box / Red: Basket)
23. Cut holes in new pavement to add landscape. Replicate west planter boxes
24. Provide benches a maximum of 300' apart throughout the park
25. New shade structure



TROTWOOD PARKS CONCEPTUAL PLANS
MADISON PARK
 CONCEPTUAL DRAWING: NOT FOR CONSTRUCTION

REVISIONS:
CHECKED BY JJB
DRAWN BY CLD
PROJECT MADISON PARK
DATE 07/16/24





CODED NOTES

1. Provide easy to read signage at all entries, including a large sign at the vehicular entry. Install wayfinding signs throughout the park with park information, trail distances, and directions to the various amenities
2. Existing parking lot. Add accessible parking and signage
3. Existing asphalt drive, cut islands into pavement to delineate driving lanes and to soften look of the parking lot
4. Existing Picnic Shelter
5. Existing playground. Equipment should be listed on a replacement schedule
6. Patio with picnic tables
7. Existing 6' wide trail
8. Bump outs in the trail for outdoor exercise equipment
9. Future playground expansion. Provide play equipment designed to be inclusive of all ages and mobility levels
10. Make play spaces more inclusive by connecting them with a sidewalk that doesn't exceed a 5% slope.
11. Open lawn
12. Add a stone / split rail fence along North Broadway to create a welcoming entry and to help delineate the park entry
13. Overlook to provide picnic space overlooking the water
14. 18 hole Disc Golf Course: Blue rectangle - T-Box, Red circle - Basket
15. Provide benches a maximum of 300' apart throughout the park

JACYN
DESIGN GROUP
22255 PETERS ROAD 64
QUINCY, OHIO 43343
937.726.5973
cdinkell@jacynndesign.com
www.jacynndesign.com

BRUMBAUGH
ENGINEERING &
SURVEYING, LLC
2270 SOUTH MIAMI STREET
WEST MILTON, OH 45383
937.698.3000
www.bes-engineer.com

TROTWOOD PARKS CONCEPTUAL PLANS
NORTH BROADWAY PARK
CONCEPTUAL DRAWING: NOT FOR CONSTRUCTION

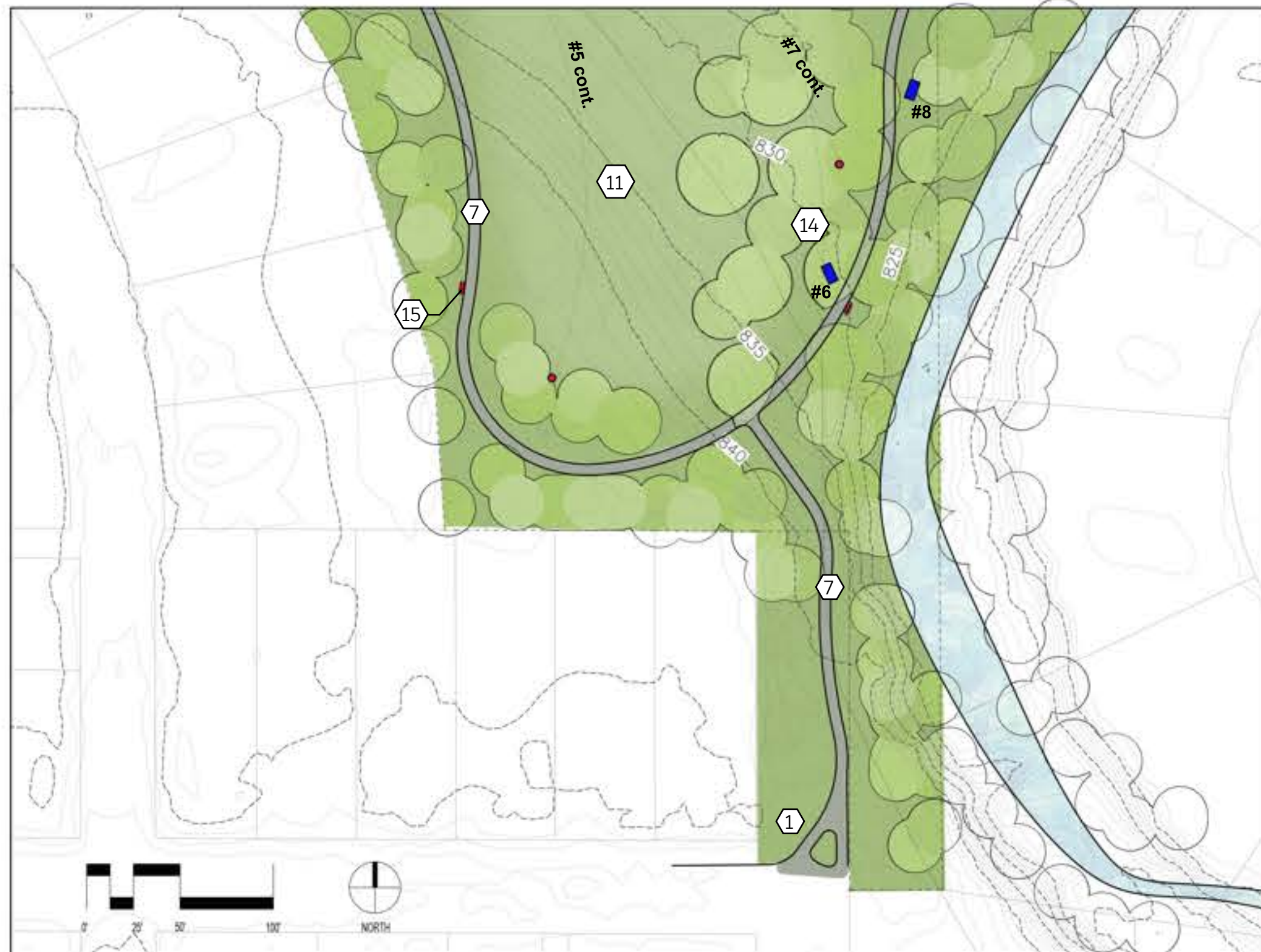
REVISIONS:

CHECKED BY
JJB

DRAWN BY
CLD

PROJECT
NORTH BROADWAY

DATE
07/16/24



TROTWOOD PARKS CONCEPTUAL PLANS
WESTBROOKE PARK
CONCEPTUAL DRAWING: NOT FOR CONSTRUCTION



CODED NOTES

1. Provide welcoming and easy to read signage for both the pedestrian and vehicular entries. Install wayfinding signs throughout the park with park information, trail distances, and directions to the various amenities
2. Entry drive
3. Parking Lot with accessible parking
4. Existing Picnic Shelter
5. Bike Racks
6. Playground with a very tall slide and activities for a wide range of ages and abilities
7. Shade structure
8. Pickleball Courts on top of refurbished existing tennis court
9. Patio with picnic tables
10. 10' wide loop trail that links all amenities
11. Basketball Court on top of refurbished existing tennis court
12. 5' wide trail to provide alternate routes
13. Plant shade and evergreen trees throughout the park and to screen view of parking lot from residential properties
14. Bump outs in the trail for outdoor exercise equipment
15. Public football field with goal posts and bleachers
16. Renovate existing Basketball Courts
17. Ball diamond
18. Provide greenspace between sidewalk and street
19. BMX/Pump Track
20. Connect the parking lot and shelter to the park's amenities with accessible sidewalks and trails
21. Provide culverts over drainageway
22. Open lawn
23. Provide benches a maximum of 300' apart throughout the park



REVISIONS:

CHECKED BY
JJB

DRAWN BY
CLD

PROJECT
WESTBROOKE PARK

DATE
07/16/24

TROTWOOD PARKS CONCEPTUAL PLANS
TWIN CREEK PARK
CONCEPTUAL DRAWING: NOT FOR CONSTRUCTION

REVISIONS:

CHECKED BY
JJB

DRAWN BY
CLD

PROJECT
TWIN CREEK PARK

DATE
07/16/24



CODED NOTES

1. Provide welcoming and easy to read signage at all entries. Install wayfinding signs throughout the park with park information, trail distances, and directions to the various amenities
2. Existing Playground
3. Existing Picnic Shelter
4. Renovate existing Basketball Court
5. Patio with picnic tables
6. 10' wide loop trail that ties into the sidewalk at Post Town Road and links the playground to the shelter house
7. 5' wide trails provide alternate routes and make play spaces more inclusive by providing an accessible route between amenities
8. Plant shade trees near play areas to provide shade
9. Bump outs in the trail for outdoor exercise equipment
10. Area for future expansion of playground with play equipment designed to be inclusive of all ages and mobility levels
11. Plant a row of flowering trees along the front of the park to create a welcoming view
12. Bridge over drainageways
13. Open lawn
14. Place benches a minimum of 300' apart throughout the park to provide respite for walkers